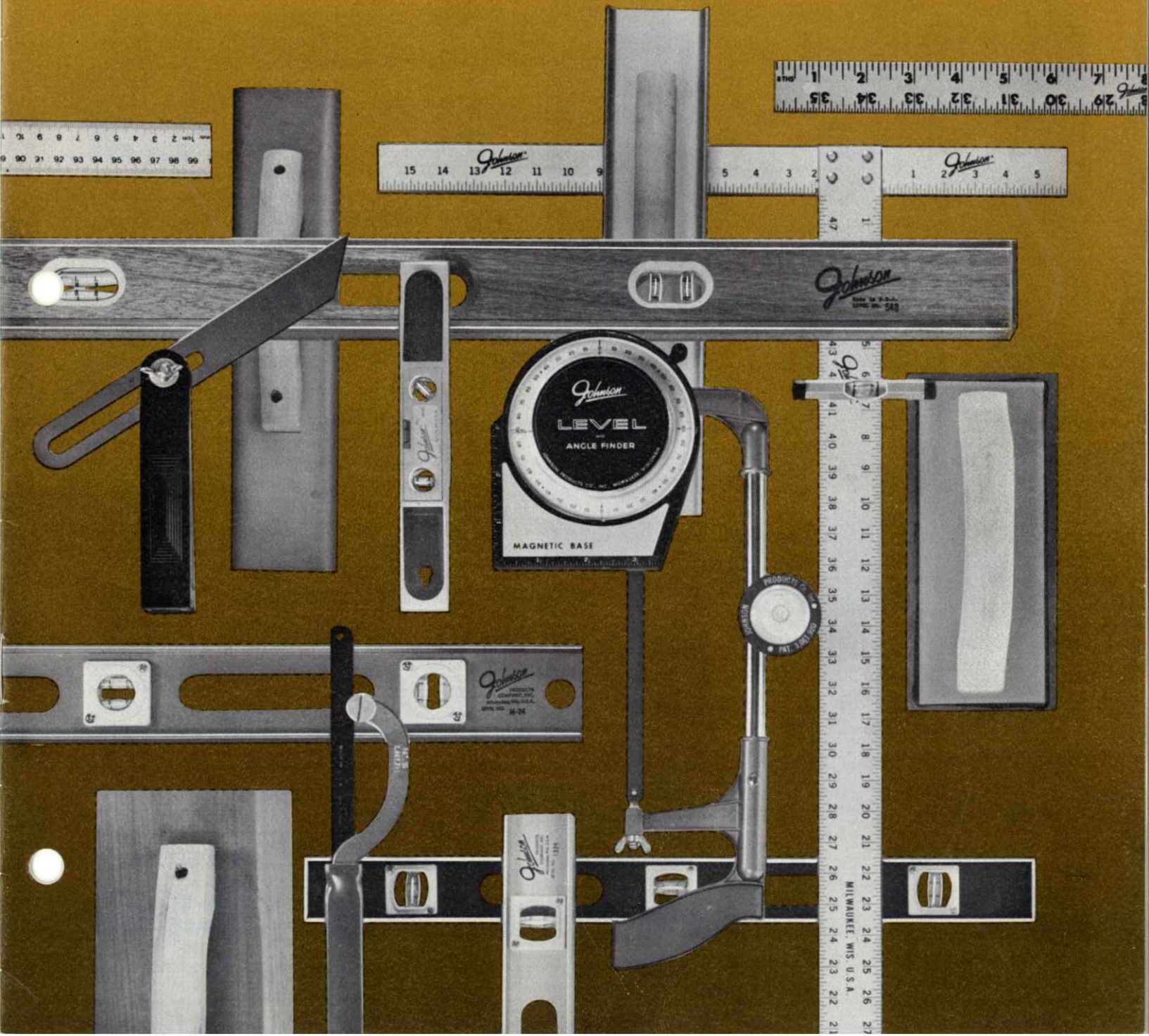


manufacturers and distributors of
quality hand tools

Johnson®

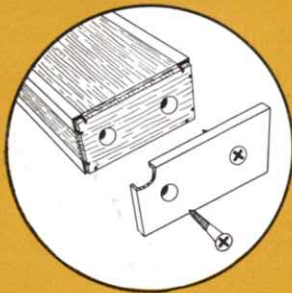




levels

Johnson's finest solid-set mahogany mason's wood levels

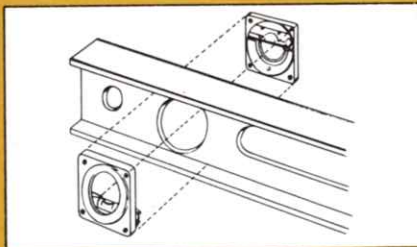
Genuine first grade, kiln dried Honduras Mahogany. Precision rolled, double angle, screwless brass binding. Solid set metallic-sealed vials. Protected on both sides by heavy glass lenses. A revolutionary new "Float Surfacing Process" machines the level frame straighter than ever possible before. This custom made machine insures accurate readings from both edges. Longer lengths, 36" to 48", have hand holes, shorter lengths with hand grips. Level size is 2-3/8" x 1-1/8".



No.	Length and Description	Number of Vials	Individually Boxed	
			No. Per Carton	Carton Wt.
548	48" Brass Bound	6	6	25 lbs.
542	42" Brass Bound	6	6	20 lbs.
536	36" Brass Bound	6	6	17 lbs.
528	28" Brass Bound	6	6	13 lbs.
524	24" Brass Bound	6	12	25 lbs.
518	18" Brass Bound	6	6	10 lbs.
948	48" Not Bound	6	6	25 lbs.
924	24" Not Bound	6	12	25 lbs.

magnesium extruded levels

Specially designed extruded magnesium frame is 1/3 lighter than aluminum yet far stronger and tougher. Unaffected by heat or cold. Extra clear viewing from shock-proof, adjustable, replaceable vial holders. Frame size: 2-1/2 x 1-1/16.



No.	Length	Number of Vials	Individually Boxed	
			No. Per Carton	Carton Wt.
M24	24"	6	6	7 lbs.
M28	28"	6	6	8 lbs.
M48	48"	6	6	12 lbs.
M72	72"	10	1	4 lbs.
M78	78"	10	1	4 lbs.
M96	96"	10	1	6 lbs.

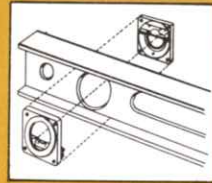
Manufactured under Johnson U.S. Patent No. 3,190,010, Canadian Patent No. 752,105 and Mexican Patent No. 73,467.

levels

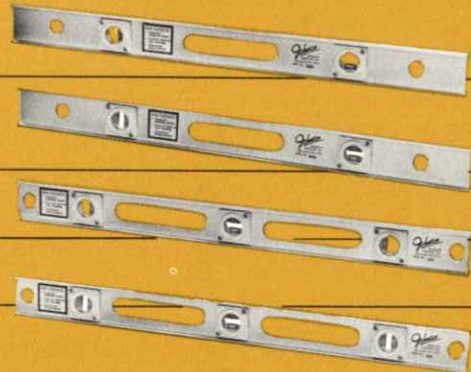
Johnson[®]

Top value in economy-priced levels. Made of extruded aluminum, with 3/4" x 2-1/8" frames, anodized finish. Unbreakable Cycholac[®] shock-proof, adjustable, replaceable vial holders hold vials securely without use of glues, binders or putty. Ideal for outdoor and low temperature use. 100% accurate. DROP TESTED over 500 times without damage to vials, protecting window or setting. Manufactured under Johnson U.S. Patent No. 3,190,010, Canadian Patent No. 752,105 and Mexican Patent No. 73,467.

light weight shock-proof,
extruded anodized
aluminum frame



No.	Length	Number of Vials	Individually Boxed No. Per Carton	Carton Wt.
6212	12"	2	36	25 lbs.
6218	18"	2	36	32 lbs.
6224	24"	2	36	42 lbs.
6418	18"	4	36	32 lbs.
6424	24"	4	36	42 lbs.
424	24"	4	36	42 lbs.
448	48"	4	12	28 lbs.
624	24"	6	36	42 lbs.
6628	28"	6	36	50 lbs.
6636	36"	6	12	22 lbs.
6642	42"	6	12	26 lbs.
6648	48"	6	12	28 lbs.



6872 72" 8 6 22 lbs.

Specially designed, heavy weight extruded aluminum frame gives extra strength and durability. Permanent anodized finish. Extra clear viewing from shock-proof, adjustable, replaceable vial holders. Large man-sized hand holes are spaced exactly right for speed and ease in handling and for instant and sure grip in use. Heavy duty frame size: 2-1/2" x 1-1/16".

heavy weight shock-proof,
extruded anodized
aluminum frame—



No.	Length	Number of Vials	Individually Boxed No. Per Carton	Carton Wt.
246	24"	6	6	10 lbs.
286	28"	6	6	11 lbs.
426	42"	6	6	16 lbs.
486	48"	6	6	19 lbs.

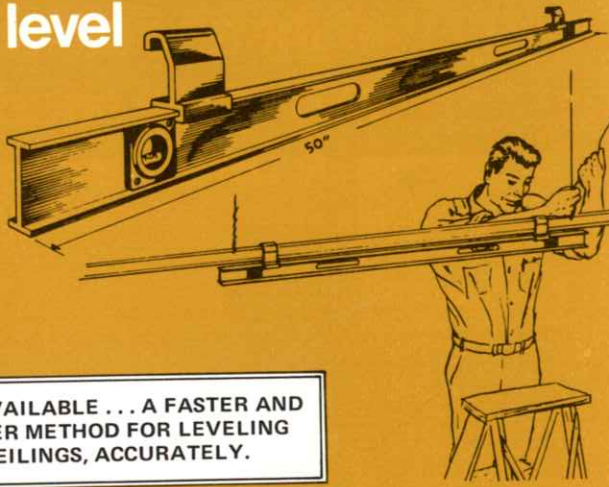


No.	Length	Number of Vials	Individually Boxed No. Per Carton	Carton Wt.
720	72"	10	1	9 lbs.
780	78"	10	1	10 lbs.
840	84"	10	1	11 lbs.
960	96"	10	1	12 lbs.

Johnson®

levels

grid level



NOW AVAILABLE . . . A FASTER AND BETTER METHOD FOR LEVELING CEILINGS, ACCURATELY.

NEW EXTRUDED EXPOSED GRID LEVEL

USE OF THIS TOOL WILL REDUCE LABOR AND GIVE AN ACCURATE LEVEL CEILING.

Designed to progressively level your Main Runner from hanger to hanger — merely engage the level on runner and level each hanger individually as you proceed.

This specially designed level also permits leveling from Main Runner to Main Runner 48" O.C. and from Cross Tee to Cross Tee.

GUARANTEED SHOCK-PROOF! PERMANENT ANODIZED FINISH! FULLY ADJUSTABLE! SNAP-IN VIAL HOLDERS!

No.	Length	Vials	Pack	Wt.
50G	50"	2 level	1 per box	5 lbs.
50BR	Brackets		2 per set	½ lbs.

utility levels



Sugar Pine — 2 Adjustable Vials TOP READING

An exceptional low priced utility level. Made with the same craftsmanship as other Johnson levels. Two opening, 2 vial with patented shock-proof vial holders. Available with or without top-reading. Frame size: 1-1/8" x 2-3/8"

No.	Length	Number and Type of Vials	No. per Carton	Carton Wt.
118T	18"	1 plumb, 1 level	6	5 lbs.
124T	24"	1 plumb, 1 level	6	6 lbs.
Without top reading				
118	18"	1 plumb, 1 level	6	5 lbs.
124	24"	1 plumb, 1 level	6	6 lbs.

carpenter levels



SOLID-SET, MAHOGANY, TOP READING

Made of the finest, select Honduras mahogany. Uniformly kiln-dried, thoroughly seasoned and air-dried. Clear lacquer finish. Solid-set non-adjustable clear vials marked for easy reading. Level, plumb, 45° vials. Large top reading window. Sealed in protecting glasses. Hand grips for ease in handling. Frame size: 2-3/8" x 1-1/8".

No.	Length	Number and Type of Vials	No. per Carton	Carton Wt.
018	18"	1 plumb, 1 level, 1-45°	6	5 lbs.
024	24"	1 plumb, 1 level, 1-45°	6	6 lbs.
048	48"	1 plumb, 1 level, 1-45°	6	12 lbs.

bull's eye circular level



An all purpose leveler that will level any surface in all directions at once. Molded of clear plastic, it is virtually indestructible. Ideal for many uses in home, workshop, industry and office.

Mounted on individual display cards.

No.	Diameter	Shelf Pack	Master Pack	Ship. Wt.
100	1-3/4"	6 cards	144	7 lbs.

levels

12, 18, and 24 inch lengths

The UNIQUE DESIGN eliminates the need for protecting lenses and permits easy removal of vial and replacement without removing the vial holder from the level.

TWO and THREE VIAL TYPES feature snap-in Replaceable Vials. **PRICED LOWER THAN ANY LEVEL** ever offered. A **HIGH QUALITY ATTRACTIVE and DEPENDABLE Instrument. ALUMINUM** in clear **ANODIZED Finish.**

Available only from us thru our representatives. **NO OTHER FIRM MAY MAKE OR SELL THESE LEVELS** — a **JOHNSON EXCLUSIVE** (U.S. Pat. No. 3,190,010; Canada and Mexico; other patents pending.)

(Special 4 doz. pack available on request.)

No.	Length	Color	Vials	No. Per Ctn.	Wt. Per Doz.
22	12"	Clear	2	12	6 lbs.
82	18"	Clear	2	12	10 lbs.
42	24"	Clear	2	12	12 lbs.
43	24"	Clear	3	12	12 lbs.

utmost promotional level



Hexagonal Case, One Level Vial. Hard drawn 3/8 in. hexagonal aluminum tubing. Special hook design prevents level from falling off line. Bottom surface perfectly flat for accurate surface leveling.

No.	Length	No. per Box	Wt. per Box
555	3 in.	6	9 ounces

aluminum line & surface level



Aluminum Torpedo Level is intended for use by both professionals and hobbyists. Red and silver finish for greater eye appeal. Level is accurate; permanently lined vials are used; one level, 45° and plumb. Base is grooved for pipe work. Magnetic model has precision ground edges to give unmatched accuracy fitted with extra strong magnet. Holds securely to iron or steel surfaces. Black finish with pitch scale. Both 9" long packed in attractive plastic pouch.

No.	Description	Shelf Pack	Master Pack	Wt. per Box
4500	Red Torpedo	10	60	3-1/2 lbs.
4500M	Blue Magnetic	10	60	3-1/2 lbs.

aluminum torpedo level



Tapered, streamline shape, handy pocket size. Two and three vial models in red finish pine or natural finish mahogany. Nickeled top plate protects level vial. 9 inches long, 1-3/4" high, 5/8" thick, 1 doz. per box. 3 vial has 1 level, 1 plumb, 1-45°; 2 vial has 1 level, 1 plumb.

No.	Description	Vials	Wt. per Doz.
400	Mahogany	2	4 lbs.
450	Mahogany	3	4 lbs.

wood torpedo levels

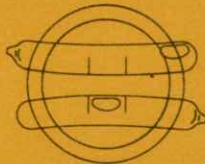


Johnson[®]

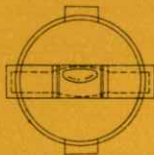


after
the perfect lev

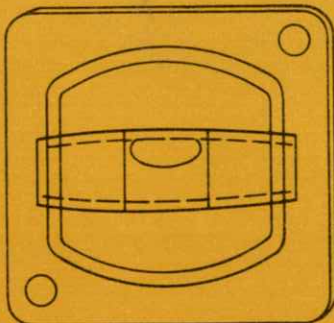
not this...



or this...



but this...

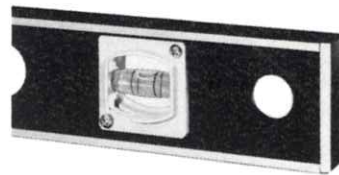


a new concept in vials

The Du-Al Vial replaces the 2 bent glass vials in traditional levels. Each bent vial can only be read one way . . . with curvature up.

The Du-Al Vial is set in an adjustable holder . . . not in the level frame as in other conventional levels. Their thin wall in the center, and straight inside ends, prevents the bubble from moving quickly and forces it to stick at either end.

1. All glass hermetically sealed . . . no chance of leakage or fluid dissipation.
2. Barrel shaped . . . the uniform curvature on the inside and outside of the vial assures identical readings as the vial is rotated on its parallel axis.
3. Reads accurately . . . no non-reading "dead spots" as in plastic vials (that are only curved in the center, between the lines). The Du-Al Vial can be read at all positions throughout the visible working length of the vial.
4. Fluid . . . the same used in conventional glass vials, not a hydro-carbon fluid.
5. Ceramic lines . . . permanently bonded to glass, go all around the vial for accurate easy reading.



the best concep

We feature a level frame, with a peels or scratches) but an anod all, it cleans easily and reduces



Clear Aluminum Anodized Finish

2 Vial - Open End

No.	Length	Individually Boxed	
		No. per Carton	Carton Wt.
1212	12"	36	25 lbs.
1218	18"	36	32 lbs.
1224	24"	36	42 lbs.



Clear Aluminum Anodized Finish

3 Vial - Open End

No.	Length	Individually Boxed	
		No. per Carton	Carton Wt.
1318	18"	36	32 lbs.
1324	24"	36	42 lbs.
1328	28"	36	50 lbs.
1336	36"	12	22 lbs.
1342	42"	12	26 lbs.
1348	48"	12	28 lbs.

DU-A
extre
alum
lev

30 years, we've developed

level... the new DUAL VIAL level from Johnson Products

a patented concept in holders

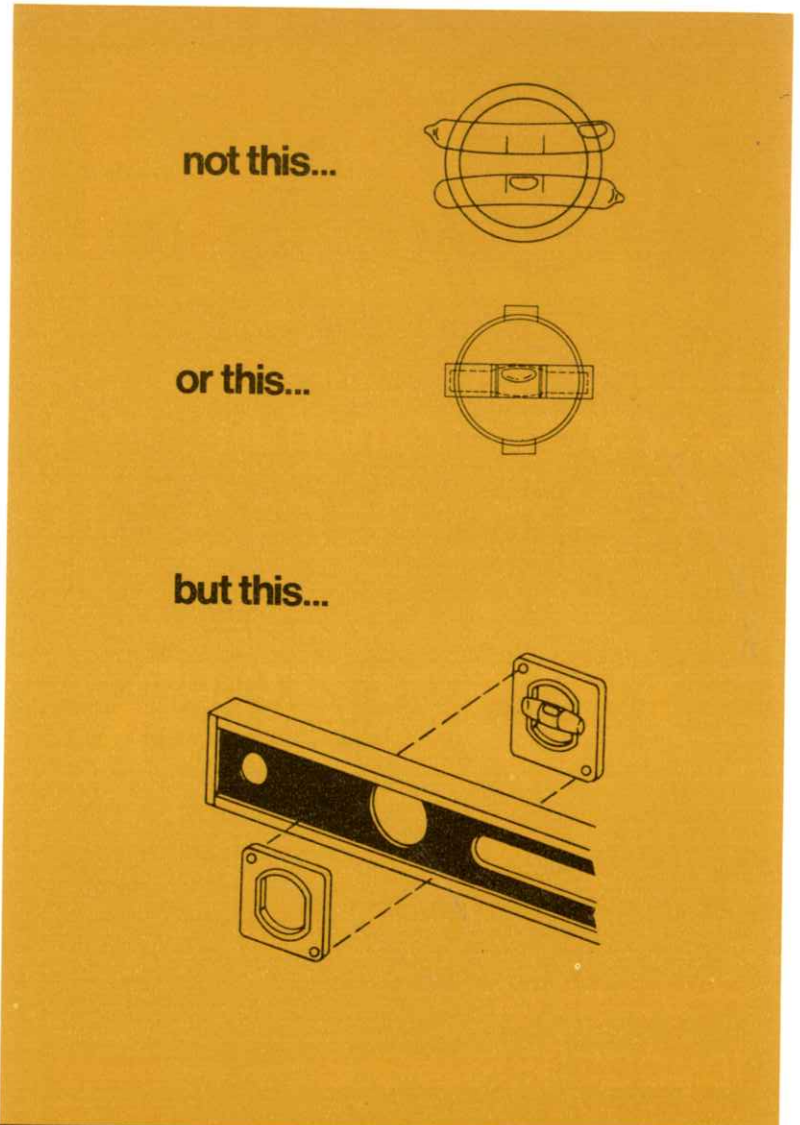
Plaster Holder. Plaster set vials break when dropped, cannot be adjusted.

Replaceable Holder. Other replaceable vial holders can be removed, but their design does not allow for adjustment due to uneven wear.

1. Patented Cyclac holder . . . is shock absorbent — vials will not break, even when level is dropped.
2. Fully replaceable . . . just remove the screws to replace broken covers.
3. Completely adjustable . . . if the frame is worn unevenly, a simple set screw allows easy adjustment.
4. No glues or adhesives . . . dropping or jarring will not damage vial or setting.

in frames

anodized finish. Not paint, or baked enamel (which cracks, and finish which resists oils, moisture, salt and corrosion. Best of cohesion of mortar, mud, etc. Available with or without end caps.



Black Anodized Finish
3 Vial — Closed End

No.	Length	Individually Boxed	
		No. per Carton	Carton Wt.
1318-CE	18"	36	32 lbs.
1324-CE	24"	36	42 lbs.
1328-CE	28"	36	50 lbs.
1336-CE	36"	12	22 lbs.
1342-CE	42"	12	26 lbs.
1348-CE	48"	12	28 lbs.



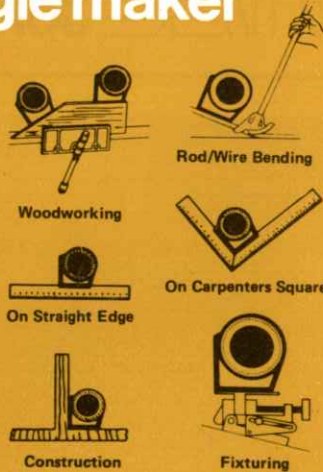
Black Anodized Finish
2 Vial — Closed End

No.	Length	Individually Boxed	
		No. per Carton	Carton Wt.
1218-CE	18"	36	32 lbs.
1224-CE	24"	36	42 lbs.

Johnson®

inclinometer drywall square

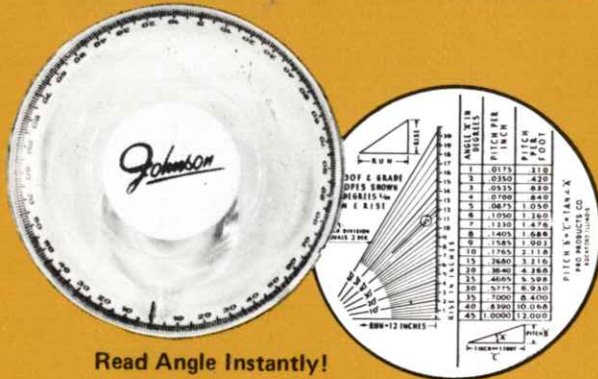
magnetic angle maker



Here's what every home craftsman as well as professional will find most helpful and easy to use for reading any angle or level any surface. The dial of the ANGLE MAKER swings 0° to 90° in either direction for fast accurate readings up to 1/2 of 1°. Constructed of high impact ABS plastic that resists heat, cold and shock. Needle enclosed and face protected with clear tough acrylic plastic. Magnetically attaches itself to carpenter's square or any metal straight edge. The ANGLE MAKER is used for general repairs, roofing, masonry, cement work, drainage, sheet metal bending, pipe bending, wire bending, woodworking, hobbies, grading, and vocational education.

No.	Description	No. per Master Ctn.	Carton Wt.
700	Individually Carded	6	3 lbs.

new 360° inclinometer level

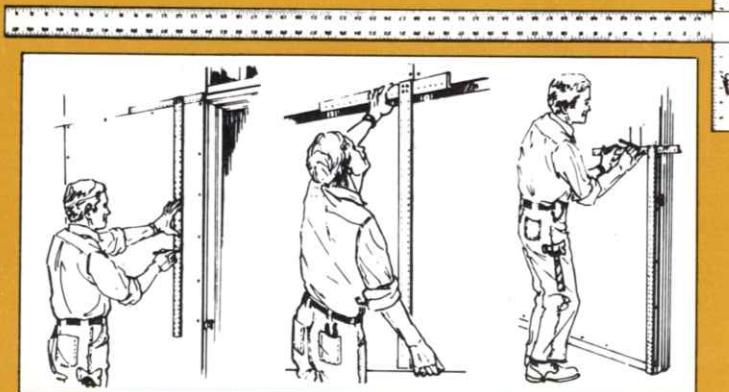


Read Angle Instantly!

A 24" combination level and protractor in one precision instrument. Reads angles directly for engineers, machinists, mechanics and set-up men. Heavy weight extruded aluminum frame has an anodized finish in black or clear aluminum. Three openings — level vials in one end and plumb in the other. Protractor is in the center opening. 2 styles available — 1 level, 1 plumb or 2 level and 2 plumb vials. Accurate to 1/2 of 1° — gives fast readings from 0° to 90° in any quadrant by merely placing it on the surface to be checked. Individually boxed.

No.	Description	Vials	No. per Carton	Carton Wt.
2421	Aluminum Finish	2	6	9 lbs.
2421-B	Black Finish	2	6	9 lbs.
2441	Aluminum Finish	4	6	9 lbs.
2441-B	Black Finish	4	6	9 lbs.

drywall or layout T-square



A necessary tool for drywall cutting and marking, sheet metal work, plywood marking and general layout.

Tempered flexible aluminum blade is 3/16 x 2 x 47-7/8 inches. The notched 3/8 x 1-1/2 x 22 inch offset head allows cutting or marking the full width of panel in one motion. Permanent anodized finish for longer wear. Blade is same width as standard outlet box permitting easy marking for hole without moving square. Four rivets secure head and blade accurately.

Distinct 1/16 inch numerals read from either end. All edges are true, accurate, square, smooth and straight.

A specially designed, heavy corrugated protective shelf carton is available for reshipment. The standard pack is two squares per shelf pack; however, a special pack of one square per individual shelf carton is also listed below.

	Shelf Pack	Master Pack	Carton Wt.
JTS-48	2	2	8 lbs.
JTS-48-1	1	1	5 lbs.

rules

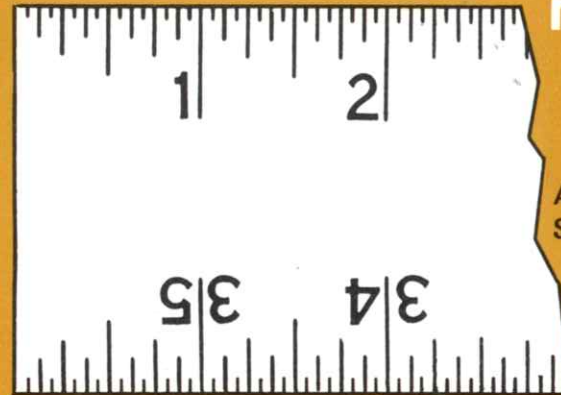


JOHNSON straight edge rules are made of flexible, tempered aluminum. Permanent anodized finish prevents oxidation. All lengths are 2 inches wide: bend resistant and will lie flat.

Large easy to read, baked on, numbers read from either end. Calibrations in 8ths on both edges.

No.	Length	Ga. In.	Shelf Pack	Master Pack	Ship Wt.
J-24	24 in.	.080	6	36	22 lbs.
J-36	36 in.	.080	4	20	19 lbs.
J-48	48 in.	.125	6	36	44 lbs.

aluminum straight edge rules



ACTUAL SIZE

Made from tempered extruded aluminum; smooth anodized finish; heat treated for extra strength and flexibility. Large clear numerals with 8th and 16th increments. Straight and parallel edges. Durable epoxy ink heat baked for permanent adhesion. Accurate and long lasting. Hang hole for storing. Packed 10 to shelf carton, 50 in outer pack. 1-1/8 inches wide, .075 inch thick.

No.	Printed	Shelf Carton	Master Carton	Ship. Wt.
J 236-36"	two sides	10 ea.	50 ea.	17 lbs.
J 136-36"	one side	10 ea.	50 ea.	17 lbs.
J 124-24"	one side	10 ea.	50 ea.	12 lbs.
J 118-18"	one side	20 ea.	100 ea.	17 lbs.
J 112-12"	one side	20 ea.	100 ea.	12 lbs.

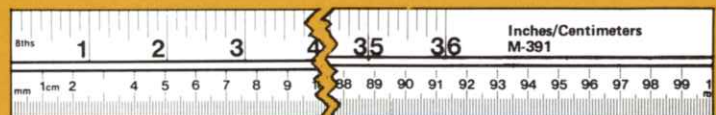
aluminum yardsticks and short rules



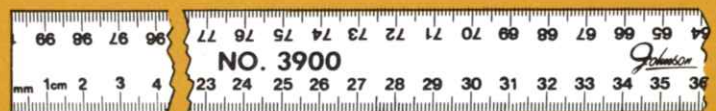
The New JOHNSON Meter Stick offers you 2 measures on one rule. Now you can compare English inches and eighths to Metric Millimeters and centimeters at a fast glance. Made of tempered extruded anodized aluminum. The Stick is one meter long (39.37 inches), 1-1/8 inches wide, .075 inch thick. Hang hole at one end. Inches and Metric increments are printed on one side only, with conversion tables such as Volumetric, linear, weight and temperature shown on the reverse side. All metric rule No. 3900 features calibrations in millimeters and centimeters only.

No.	Printed	Shelf Carton	Master Carton	Ship. Wt.
M-391	two sides	10 ea.	50 ea.	19 lbs.
3900	two sides	10 ea.	50 ea.	19 lbs.

meter stick



Conversion Tables	When you know: Times (x): To find:	When you know: Times (x): To find:
	inches in 2.54 square inches in ²	ounces oz 28.34 grams g
	feet ft 30.48 square feet ft ²	pounds lb 0.45 kilograms kg
	yards yd 0.84 square yards yd ²	short tons (2000 lb) 0.90 tonnes t
	miles mi 1.61 square miles mi ²	



hacksaws design revolutionary



- ① Internal extra blade storage
- ② Blade holding pins are part of saw . . . they never can be lost.
- ③ Revolutionary blade locking lever hidden in handle.

The only hacksaw with lever action blade tensioning, without thumb nuts. Push button adjustment for 10" and 12" blade lengths. Flush cut — both vertical and horizontal positions — without marring surface. Internal blade storage. Heavy nickel chrome plated steel frame — will not rust. Full 4" clearance depth. Comfortable handle with proper pressure angle. **PROFESSIONAL QUALITY — FOR THE MAN WHO WANTS THE VERY BEST.**

No.	Shelf Pack	Master Pack	Wt. per Doz.
365	12	72	15 lbs.

tubular hacksaw frames



Adjustable tubular frame with die cast aluminum handle. Accommodates 10" and 12" blades. Internal blade storage. Comfortable, easy grip handle. Comes with one blade

No.	Packing	No. per Carton	Carton Wt.
65	Bulk Pack	36	33 lbs.
600	Individually Boxed	36	50 lbs.

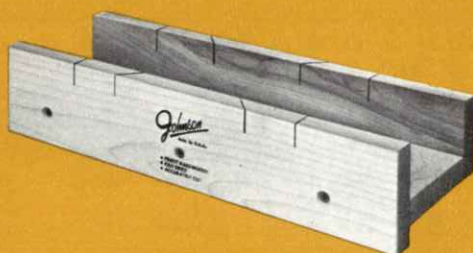
mini-saw hacksaws



Uses regular hack saw blades or even broken ones. Durable all steel frame with non-slip vinyl grip. Cuts flush even in confined areas. Does everything a big saw will do and more. Attractively carded for easy selling. One saw per card. Blade is included.

No.	Shelf Pack	Master Pack	Wt. per Dozen
60	6	72	4 lbs.

mitre boxes



Ideal for the "Do-It-Yourself" handyman or the Experienced carpenter. A sturdy box for cutting simple cross cuts and miters. Sides and bottom made of 3/4 inch select straight grained kiln-dried wood. Slotted for left or right miters at 45 degrees and for right angle cut-offs. For use with panel or back saw. Sides screwed, one side offset for holding box firmly against edge of workbench.

No.	Length	Kind of Wood	Shipping Case	Ship. Wt.
1200	12"	Hardwood	1/2 dozen	13 lbs.
1600	16"	Hardwood	1/2 dozen	18 lbs.

floats T-bevel

Professional quality. Made of genuine California Redwood with comfortable mansized handle. STRONG, LIGHT AND DURABLE.

No.	Size	No. per Carton	Carton Wt.
FW612	5x12x $\frac{3}{4}$ "	6	6 lbs.
FW615	5x15x $\frac{3}{4}$ "	6	7 lbs.

ALL JOHNSON FLOATS ARE DESIGNED FOR THE PROFESSIONAL CEMENT WORKER

Float Handle

No.	Size	No. per Carton	Carton Wt.
FH9	9"	12	4 lbs.
FH8	8"	12	4 lbs.



redwood float



Float Handle fits any float.

Extruded from the hardest known aluminum alloy. Heat treated for durability and long life. Large comfortable handle. Rounded deges. SIZE: 3-1/4 x 16 x 3/16". Aluminum anodized finish.

No.	No. per Carton	Carton Wt.
FA616	6	6 lbs.



aluminum float

This float is made of the hardest magnesium for durability and long life. Light in weight. Large, comfortable mansized handle. Blue baked enamel finish.

No.	Length	No. per Carton	Carton Wt.
FM612	3 $\frac{1}{2}$ "x12"	6	8 lbs.
FM616	3 $\frac{1}{2}$ "x16"	6	9 lbs.
FM620	3 $\frac{1}{2}$ "x20"	6	10 $\frac{1}{2}$ lbs.
FM624	3 $\frac{1}{2}$ "x24"	6	12 lbs.



magnesium floats

Designed for the professional cement worker and plasterer. Available in either $\frac{1}{2}$ " or $\frac{3}{4}$ " and fine or coarse cell rubber. Sponge rubber pad cemented to aluminum backing for rigidity. Long wearing rubber.

No.	Length	No. per Carton	Carton Wt.
FR61 (Fine)	9x4x $\frac{1}{2}$ "	12	7 lbs.
FR62 (Coarse)	9x4x $\frac{1}{2}$ "	12	7 lbs.
FR63 (Fine)	9x4x $\frac{3}{4}$ "	12	9 lbs.
FR64 (Coarse)	9x4x $\frac{3}{4}$ "	12	9 lbs.
FR65 (Fine)	12x4x $\frac{1}{2}$ "	12	9 lbs.



rubber floats

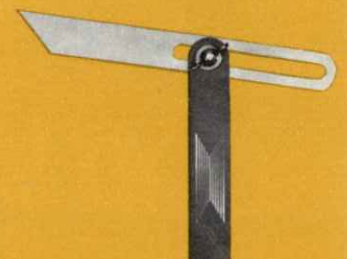
Made for the craftsman who appreciates the best. USE for laying off window sills, rafter cuts, ridge angles, setting table saw mitres.

Blade is bright nickel plated, full hard steel tempered, 8" x 1" x .053". Positive wing nut clamping at any angle. Unbreakable Cycloc handle.

Catalog No.	Shelf Pack	Master Pack	Master Wt.
B-75	6 ea. Individually Carded	36 ea.	10 lbs.



sliding T-bevel



Johnson®

no.11 level merchandiser

**SPECIAL
"SPACE SAVER"**

**FREE DISPLAYER
PLUS
AN ASSORTMENT
OF BEST SELLING
LEVELS**

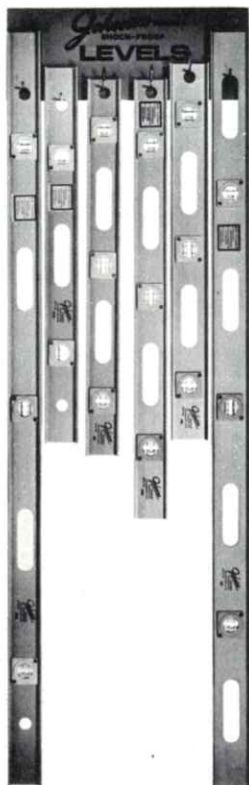
**Assortment includes
6 level styles**

Aluminum

2-48 inch 6 vial (6648)
2-24 inch 2 vial (6224)
2-24 inch 6 vial (624)
2-28 inch 6 vial (6628)

Aluminum

1-24 inch 6 vial (246)
1-48 inch 6 vial (486)



Guarantee

Every Johnson level and tool is guaranteed to be mechanically accurate, free of imperfections in material and defects in workmanship. Rigid inspection safeguards Johnson's reputation for Quality.

Any defective Johnson level or tool will be repaired or replaced, without charge. However, we do not assume responsibility for breakage where no flaw appears; nor will we replace or repair at our expense any tool which has been abused, tampered with, or bears carving or stamp of owner's name, or shows evidence of excessive use. Any tool claimed to be defective must be returned by the owner, carrying charges prepaid, with letter explaining claim. **WHOLESALE AND DEALERS ARE NOT AUTHORIZED TO MAKE REPLACEMENTS.**

sales policy and price

Johnson Levels and tools are sold and distributed only through recognized hardware wholesalers and industrial supply distributors.

Prices of all items shown in this catalog will be found in our current Price List. All orders are accepted and invoiced by us at prices in effect at time of shipment.

sales offices

SAUL TUGMAN

200 S. Washington
Royal Oak, Michigan 48067
Phone: 313-355-1560

R.A. YEAGER, INC.

88 Conover Lane
P.O. Box 147
Middletown, New Jersey 07748
Phone: 201-842-8325 or
201-787-0576

DONALD E. SAVARD CO.

P.O. Box 267
418 S. Pine St.
San Gabriel, Calif. 91776

RICHARD F. MURPHY CO.

P.O. Box 74
Grafton, New York 12082
Phone: 518-279-9038

G.C. HUNNEWELL CO., INC.

Crystal Lake Airport
P.O. Box 473
Crystal Lake, Ill. 60014
Phone: 815-459-5551

KENNETH HOUT

14007 S.E. Harrison
P.O. Box 4282
Portland, Oregon 97208
Phone: 503-254-7006

KRANER & ASSOCIATES

1703 Imperial Crown
Houston, Texas 77043
Phone: 713-464-8733

MARVIN STAMM AND CO.

156 E. Walnut Park Drive
Philadelphia, Pa. 19120
Phone: 215-927-3035

AL HARTLE

P.O. Box 305
Jackson, Missouri 63755
Phone: 314-243-5335

R.H. RABE CO.

1050 Yuma St.
Denver, Colo. 80204
Phone: 303-222-0186

WILLARD IHLEFELD & ASSOC.

1201 San Marco Blvd.
Jacksonville, Fla. 32207
Phone: 904-396-5282

VERNON A. BITHELL

10215 Henry Mill Rd.
Fairburn, Ga. 30213

E.W. DRODY

126 N.E. 109th St.
Miami, Fla. 33161

CHARLES SILVER

1708 Jennings Way
Norcross, Ga. 30071

JAMES E. SKIPPER

2531-C Mountain Lodge Cir.
Birmingham, Ala. 35216

FOREIGN SALES OFFICES

C.J. DREIFUSS, INC.

26 Court St.
Brooklyn, N.Y. 11242
Phone: 212-624-7332

MADISON PRODUCTS CO., LTD.

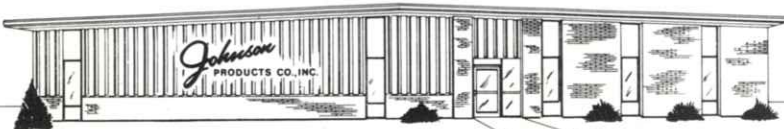
804 90th Ave.
La Salle 650, Quebec, Canada
Phone: 514-365-0050
Telex: 052-4894

MADISON PRODUCTS CO., LTD.

705 Progress Ave.
Unit No. 5
Scarboro 707, Ont., Canada
Phone: 416-438-6808
Telex: 06-217503

MADISON PRODUCTS CO., LTD.

1090 West 7th Ave.
Vancouver 9, B.C., Canada
Phone: 604-731-0488
Telex: 045-5406



JOHNSON PRODUCTS COMPANY, INC.

2072 North Commerce Street, Milwaukee, Wisconsin 53212 • (414) 263-6060